

150-M ton Truck Crane

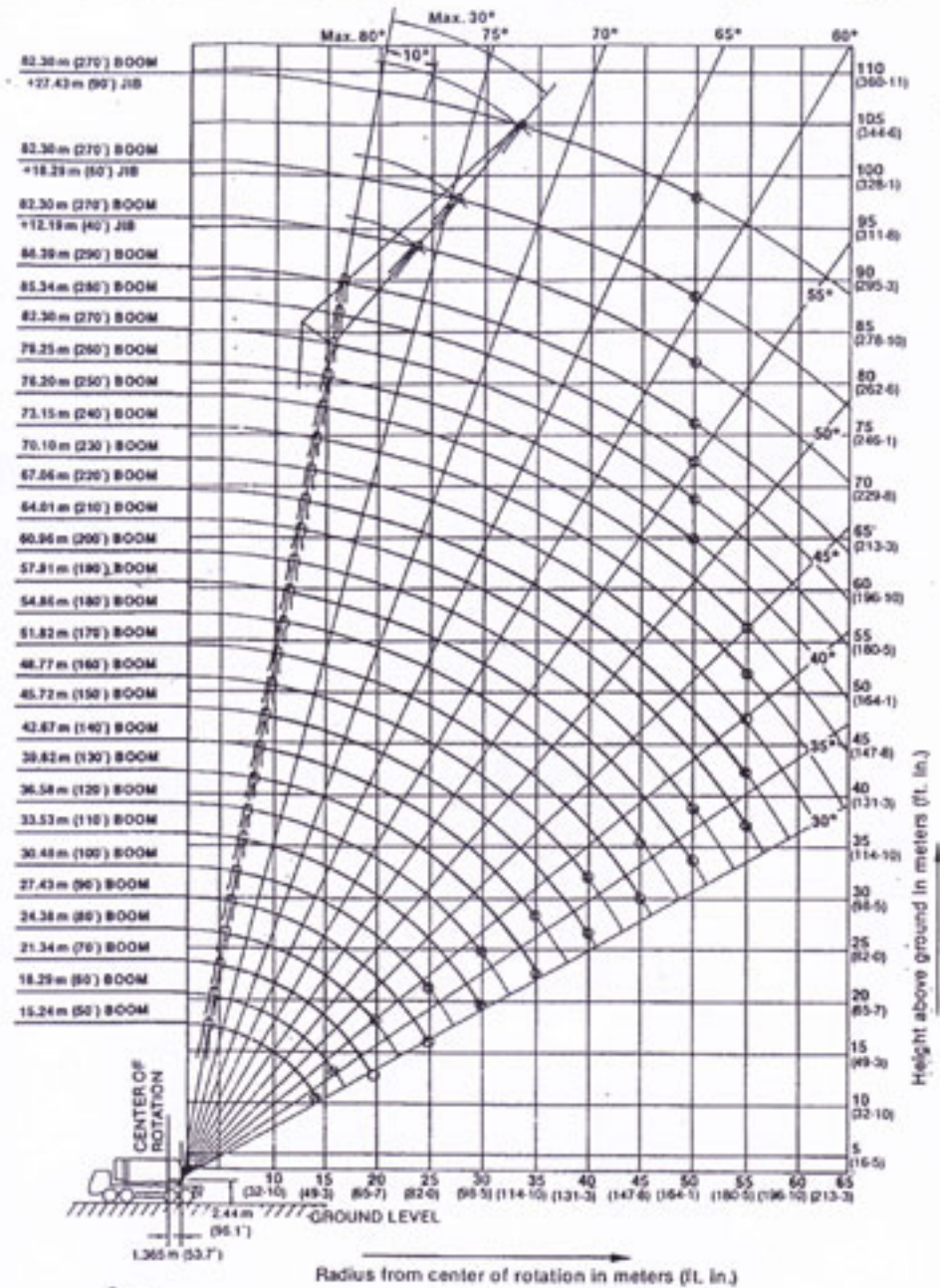
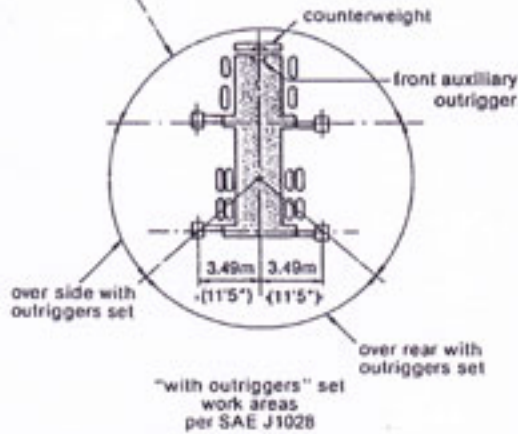
Working Ranges

88.39m Boom

82.30m Boom+27.43m Jib

• WORKING AREAS

Operation Within "Over Side Outriggers Set"
 Ratings in this sector are approved only when
 (optional) front auxiliary outrigger is set. Maximum
 rated load is 65 metric ton.



General Dimensions

Unit: mm (in.)

